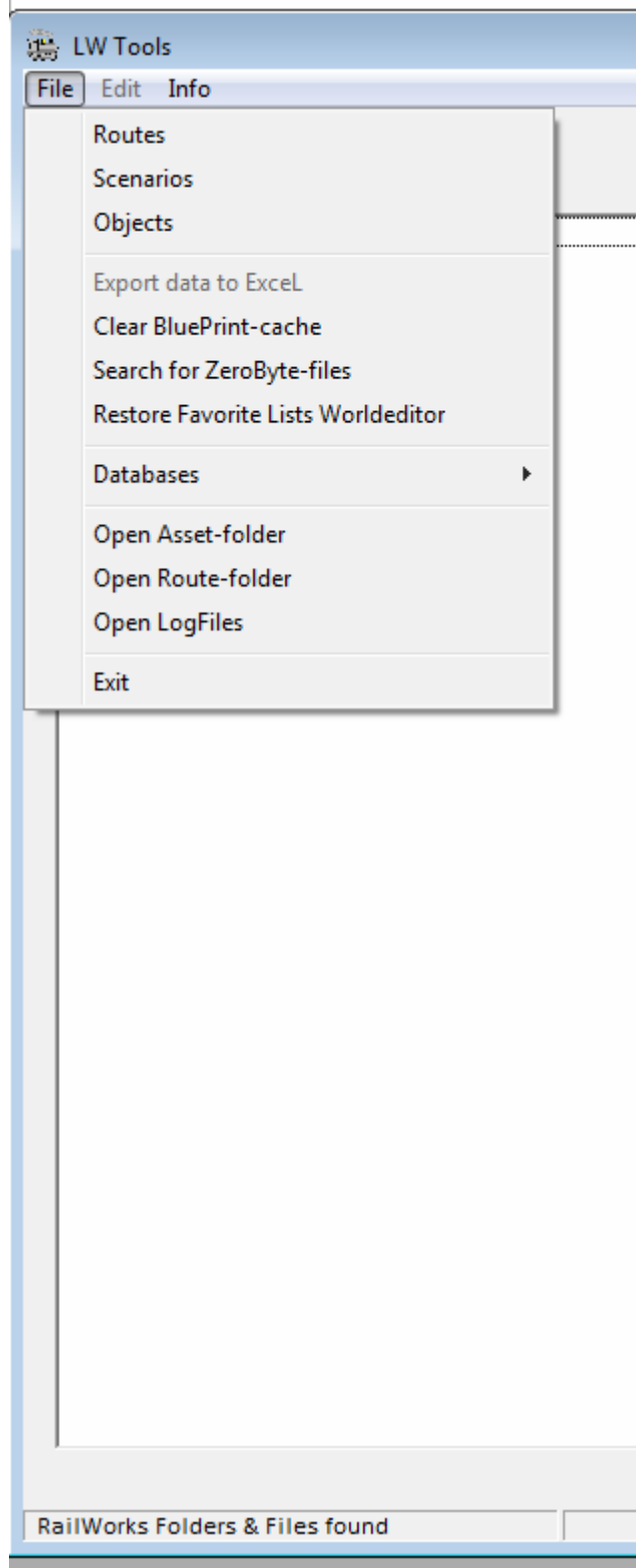


Start Menu



Routes > List of all installed routes

Scenarios > List of all scenarios of selected route

Objects > go to Object-browser

Export data to Excel > enabled if Excel >2003 is installed and if displayed data is 'exportable'. This relates to all data in listboxes or datagrids. Column and row formatting in Excel is made automatically. Implementation of printing routines in LW Tools hereby not needed.

Clear Blueprint-cache > searches for all *.pak-files and deletes them on demand. Usefull because changes in RS-files are only applied after clearing the BP Cache. You don't need to go into the cache clearing of RS itself and after that going through the hassle of restarting the game again. It also saves the favorites toollists (red,green,blue-bar in World Editor) which unfortunately are cleared as a consequence of clearing the BP-cache.

Search for ZeroByte-files > an inheritance from the early days of RS2013 where accidentally empty files were created. Empty files can also occur when serz.exe was not called properly.

Restore Favorite Lists Worldeditor > brings back the content of the red, green & blue bars in the Word Editor second-left fly-outbox. (see also Clear Blueprint-cache).

Databases > Several databases are created on demand for faster access to Vehicles, Signals, etc. Not elaborated yet, for future use.

Open Asset-folder > opens the asset-folder in Explorer

Open Route-folder > opens the route-folder in Explorer.

Files (*.bin, *.GeoPcDx, *.TgPcDx) are opened through serz.exe and then transferred to the system registered text-editor. Files (*.xml, *.proxysql) are opened directly in the text-editor. LW Tools makes the appropriate file-associations in the Windows Registry at start-up.

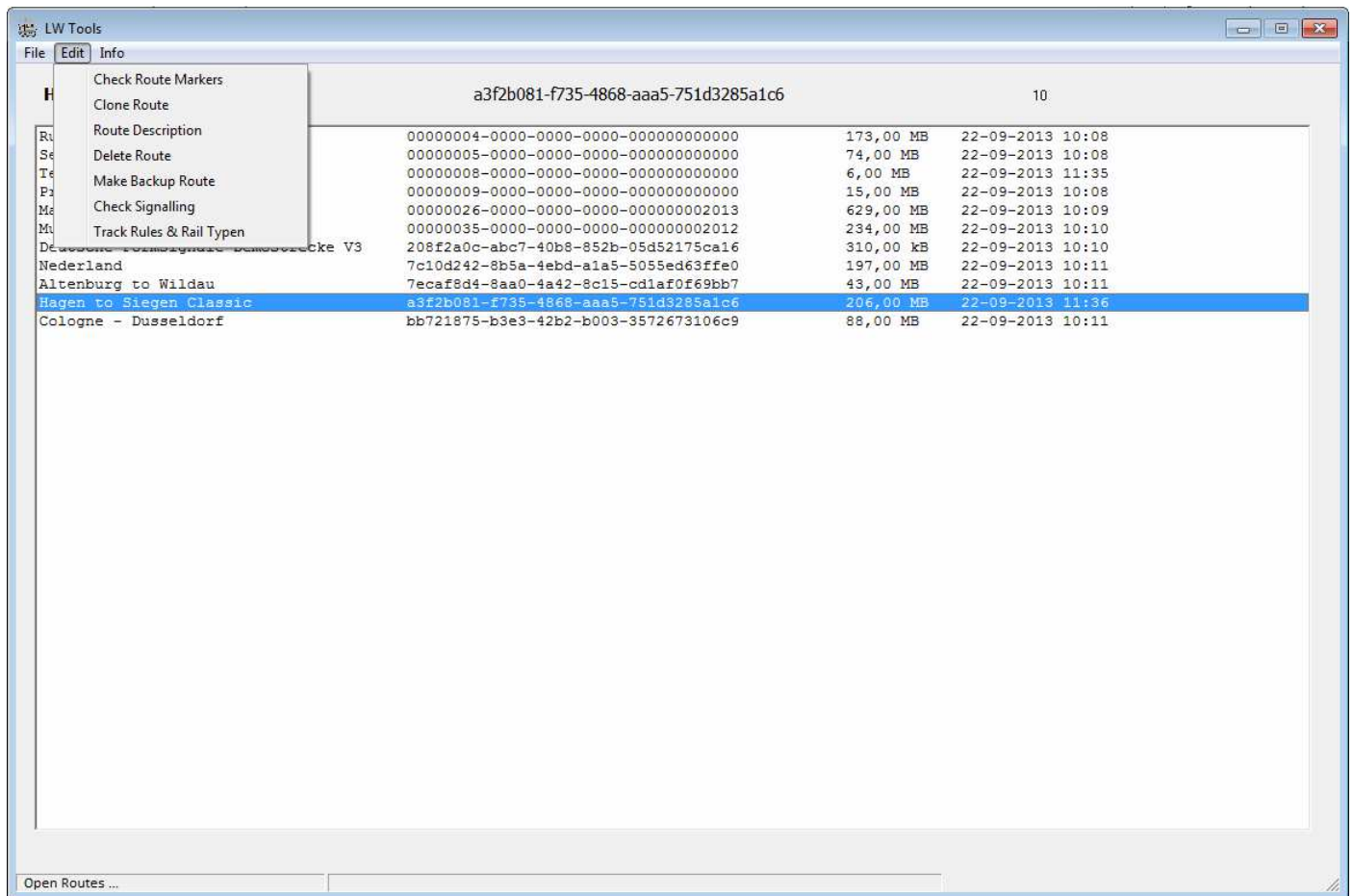
Open LogFiles > used for testing/debugging LW Tools

Exit > exit LW Tools

'RailWorks Folders & Files found' > LW Tools searches at start-up the paths and files for RailWorks / RailSimulator, when not found a warning comes up and you can manually set the needed paths.

Menu items sequence not definite yet.

Route menu



Check Route Markers > checks for ambiguous names for Portals, Sidings, etc. that can cause errors in scenarios or editing scenarios.

Clone Route > clones the route and creates a unique UID-GUID beyond the range of installed files and future RSC GUID numbers (3x '0000' at group-position 2,3,& 4)

Route Description > shows the description.html of the selected route. Future use to edit this html-file.

Delete Route > removes the route from the route-folder.

Make Backup Route > backs up the selected route at a selected location. For each Backup a unique timestamp is created, f.e. 'a3f2b081-f735-4868-aaa5-751d3285a1c6_10082013_121650' is a backup-folder of Hagen Siegen Classic created on August 10 2013 at 12:16:50.

Check Signalling > checks the signalling, signalpositionning and link-direction of the signal on the route. Not fully elaborated yet.

TrackRules & RailTypes > shows the trackrules and -types of the selected route and all trackrules and -types installed in RS. You can swap here tracktypes- and rules by selecting the route-track to be swapped and the desired new track. This can take some time to accomplish.