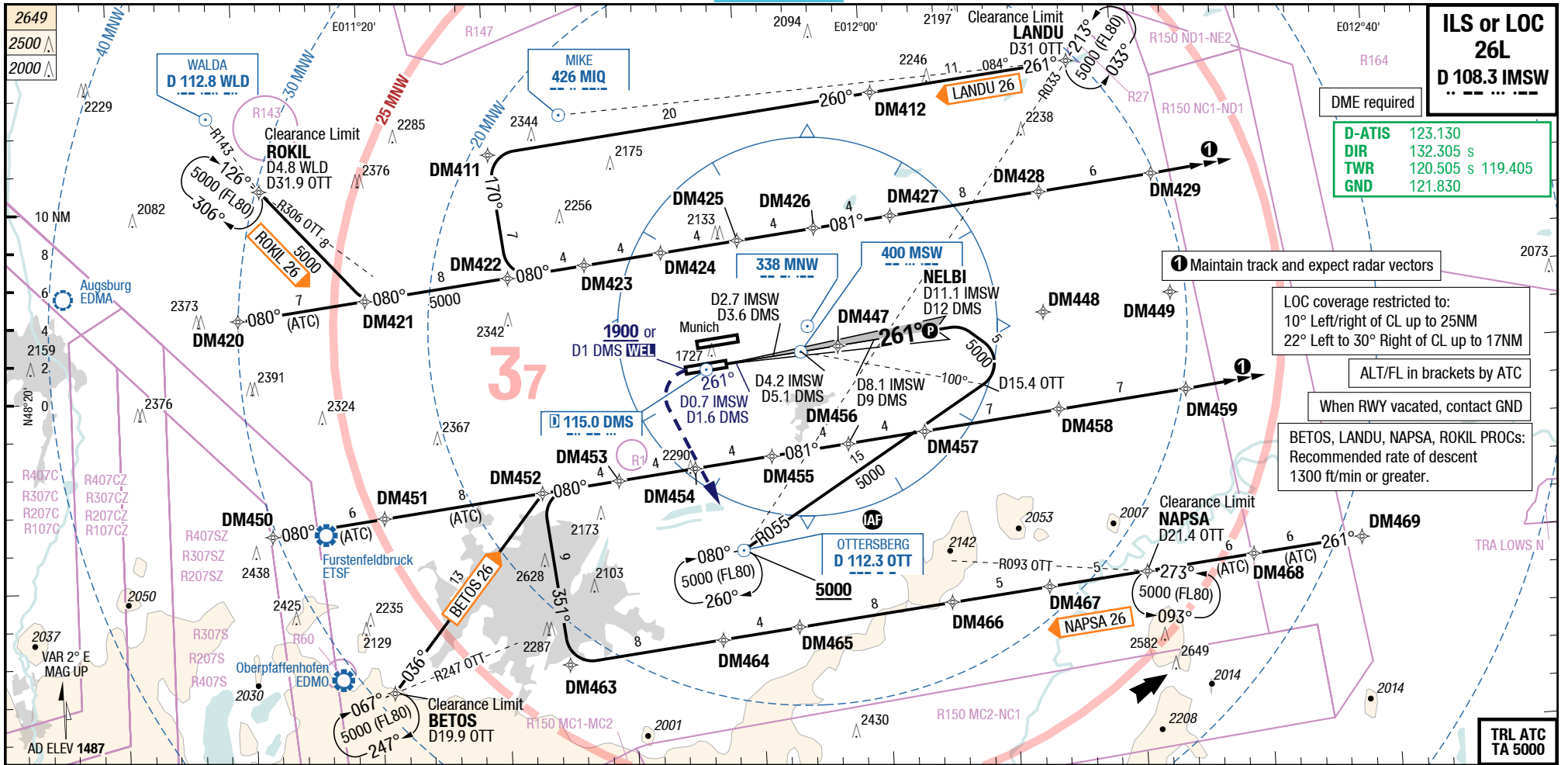


ILS or LOC 26L
D 108.3 IMSW

D-ATIS 123.130
DIR 132.305 s
TWR 120.505 s 119.405
GND 121.830



| 26L | | Cat 3b DME | Cat 2 DME | Cat 1 DME | Cat 1 DME | LOC DME | Circling |
|-----|-----------------|---------------------------|--------------------------------|--------------------------|--------------------------|--------------------------|---------------|
| C | ft - m/km ft | 0 - 75R Company | 100 - 300R 106 RA | 200 - 400 1670 | 200 - 550 1670 | 410 - 1.2 1880 | Not published |
| D | ft - m/km ft | 0 - 75R Company | 100 - 300R 106 RA 2) | 200 - 400 1670 | 200 - 550 1670 | 410 - 1.2 1880 | Not published |

1) With EVS 350m, wo EVS use STD
2) If not conducting autoland RVR 350m required

