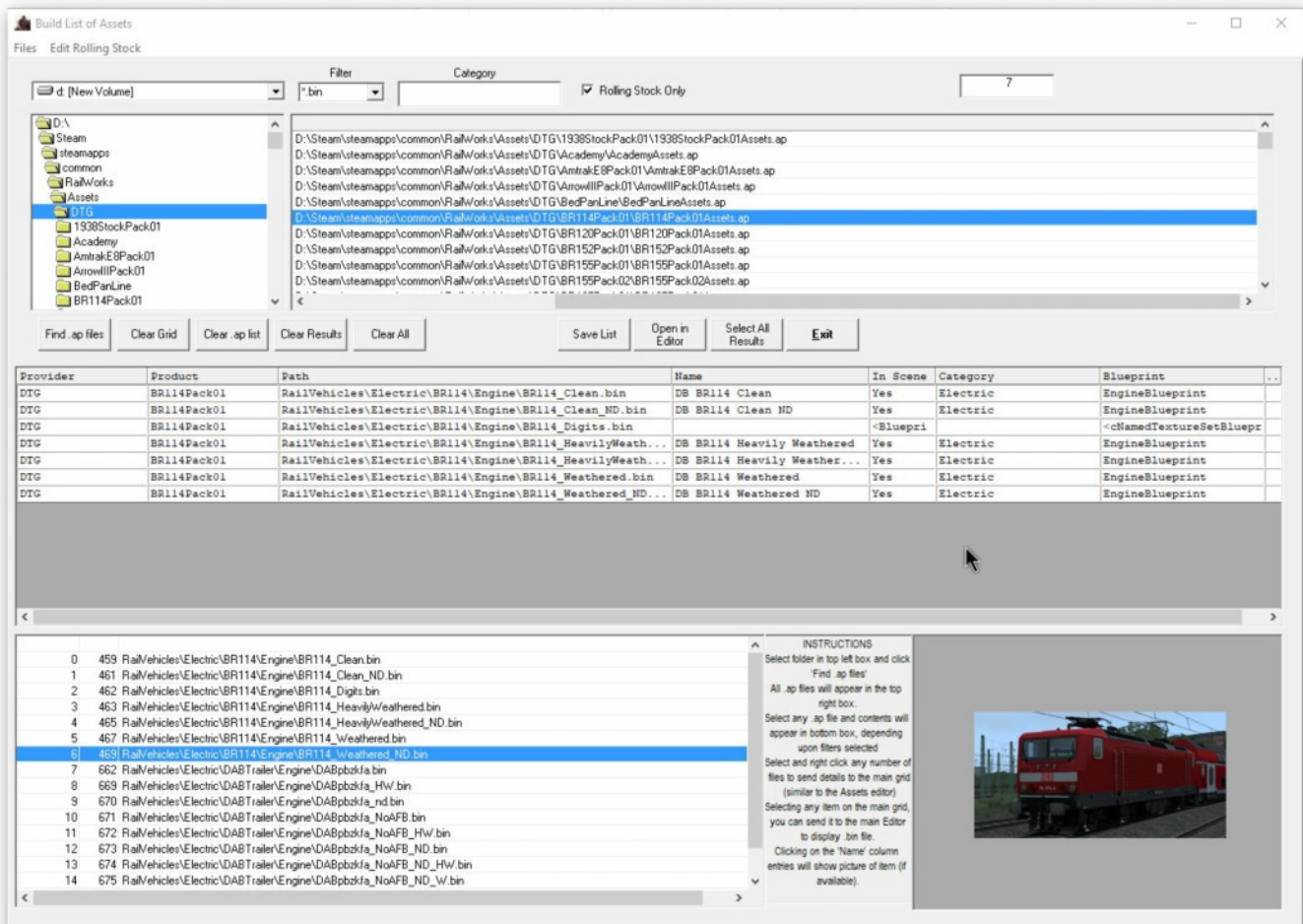


New:- AP Editor

I have added a new option to the Edit Assets/Content menu 'AP Editor'. This brings up a screen similar to the Assets Editor, but aimed at viewing the contents of .ap files without your having any need to unpack them.

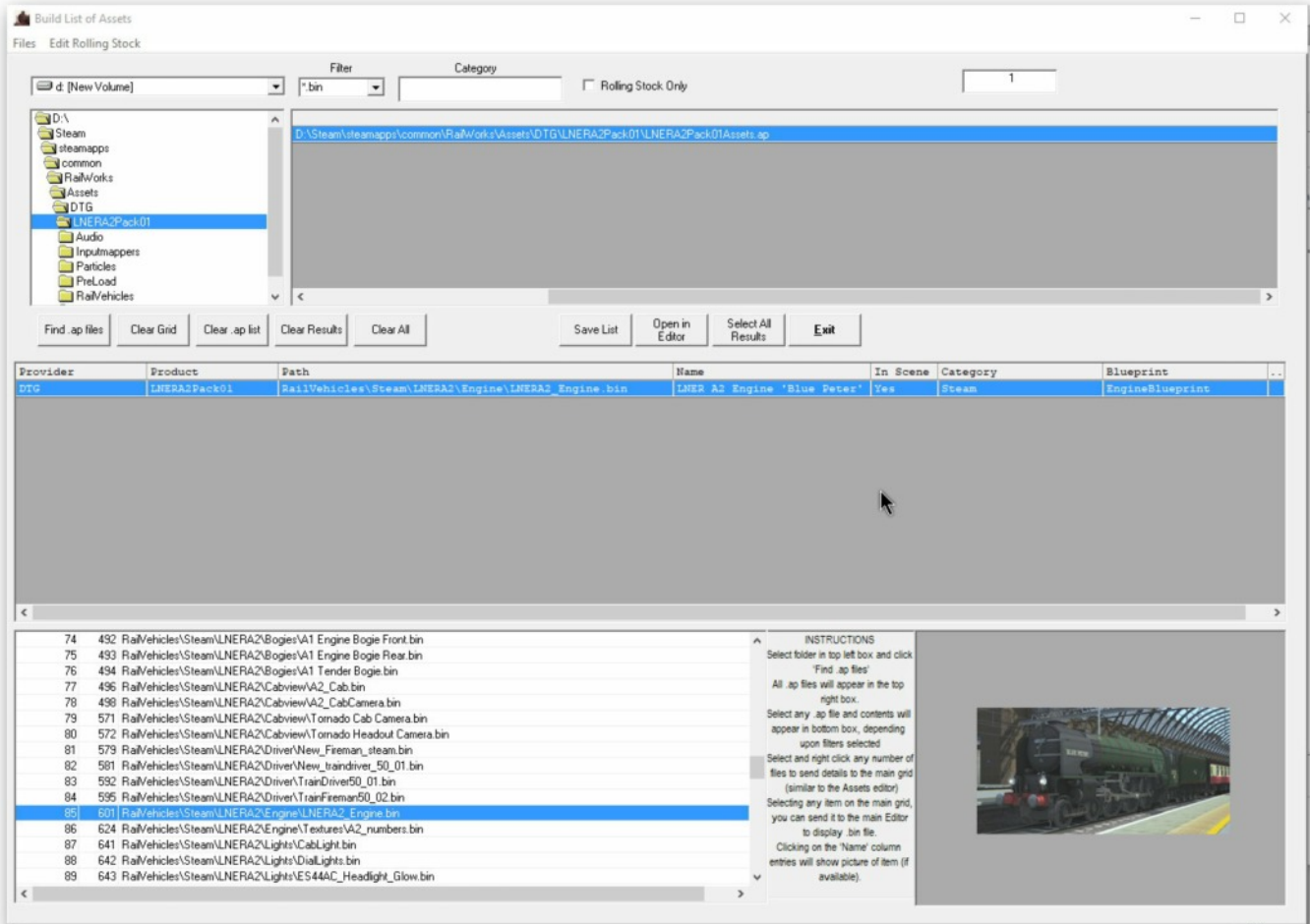


When you open this screen all the boxes apart from the files list, top left, are blank. So you must select a folder (can be Assets, Content or even Railworks, or a specific folder like BR114Pack01) then click 'Find AP files' and all the .ap files in the folder will appear in the top right-hand box.

As with the Assets editor, you may choose .bin, .tgpcdx or .geopcdx files in the 'Filter' box and you may choose 'Rolling stock only' by ticking the relevant box. Then clicking on a selected .ap file will display its contents in the bottom left hand box.

You may then select any number of files in the bottom left hand box by Ctrl-Clicking them and once selected, Right-click on any of the selected files for further details to appear in the grid in the middle of the screen. This middle box acts the same as in the Assets Editor, clicking on the 'Name' column shows a thumbnail of the loco if one exists and clicking on the 'Open in Editor' button allows you to view the contents of .bin files.

You can't save edited .bin files which are inside the .ap folder but I have added a new 'Save As' option in the editor's Files menu which will allow you to save such a file e.g. to a temporary folder if you so wish.



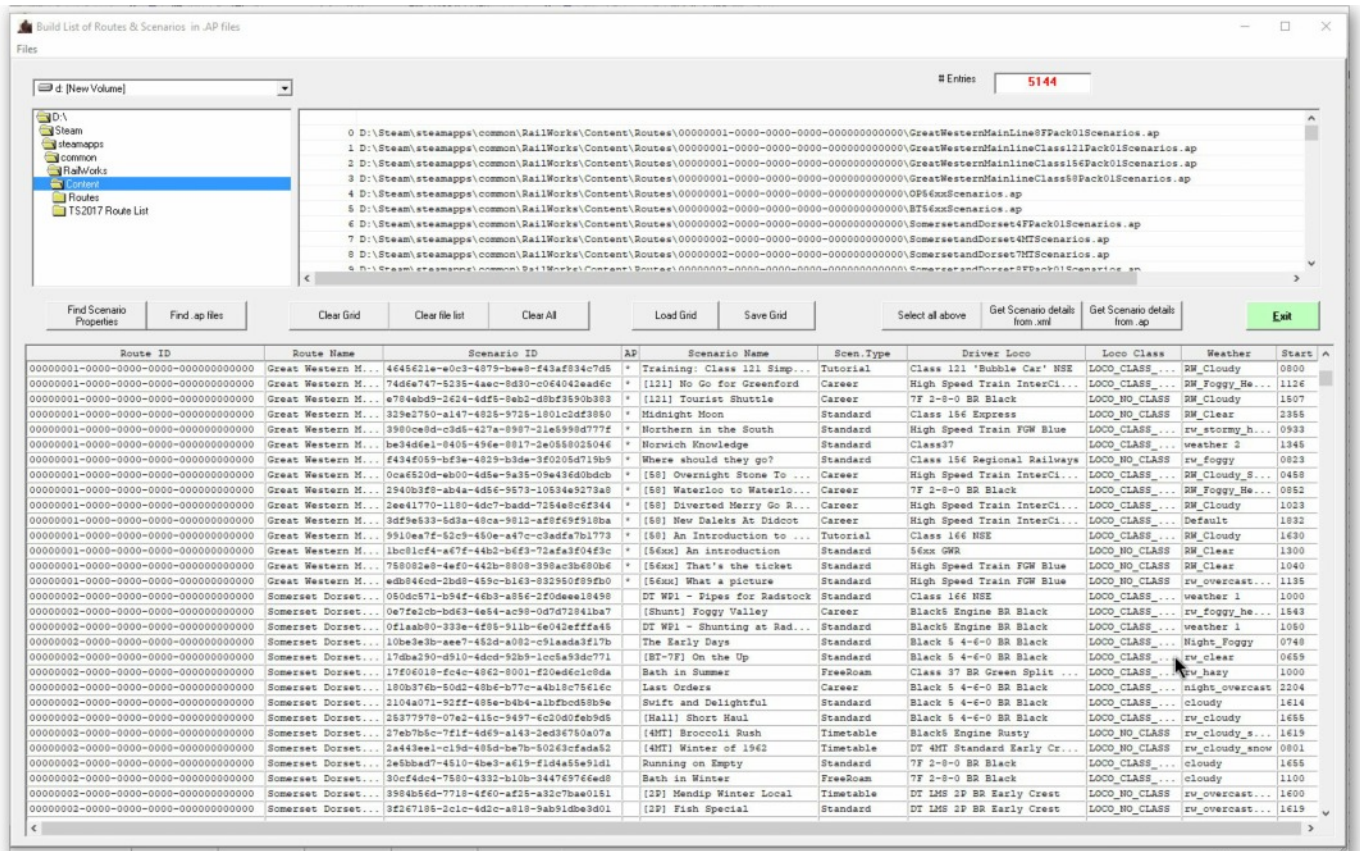
This picture shows where a single .bin file has been selected, the contents are in the lower left box and the Loco has been selected to show details in the grid. After which the Name has been clicked and the picture displayed.

Please advise if there are any other things I can add to this and I will endeavour to do so.

Also please note that RW_Tools no longer checks for new versions every time it was run, this was adding a great number of hits to my web site, and they have put the price up :-(As the program is no longer payware, and I am on an old age pension, it is not so easy to keep paying for the web site and I may have to shut it down eventually, but I will see what difference this makes to the usage.

AP Content Editor

Similar to the AP Assets Editor is the AP Content Editor which is not actually an editor, but rather a facility for displaying all your routes and scenarios along with details of the scenarios on a sortable grid.



You will need to zoom the picture in Adobe reader to see the details.

To use this option in full, you must proceed as follows:-

1. First time use(or any time new routes are added), go to the Files menu on this screen and run the option to 'Build Route Index', this index is a list of routes HEX numbers and their names.
2. Then click 'Find Scenario Properties' which will fill the top right hand box with a list of all ScenarioProperties.xml files found for all routes. Then click 'Select All' followed by 'Get scenario details from .xml' which will grab details from all the xml files and fill the grid (may take a while if you have a large number of routes).
3. At this point, click 'Clear file list' to empty the top right files box and click 'Find .ap files' which will fill the box with all .ap files in the Content folder. Then proceed as above by clicking 'Select All' followed by 'Get Scenario details from .ap' which will go through all of the .ap files, extract the ScenarioProperties.xml from then and add the detail to the grid.
4. Once finished, click on top of the first grid column on the words 'Route ID' and the column will be sorted in route HEX order.

5. Make the window 'full screen' for easier viewing. You can also change the column widths as in other spreadsheet programs by double-clicking on the dividers between the headers on the top line of the grid, or by dragging the divider lines to get better views of the data.

You can also save the filled grid as a .csv file to export to Excel or similar spreadsheet program. You can also load the grid back into this program to save you having to go through the above items 1-4 using the 'Load Grid' button.

Notes:

- a. An asterisk '*' in the AP column indicates that the scenario in question is held in an .ap file.
- b. 'Start' indicates the start time of the scenario in the game.
- c. The Loco details refer to the driven loco only.
- d. You can just run the 'Find .ap files' to see details of Scenarios held therein, however please note that for some reason I can't determine, if you do this, then you must restart the program before you can use the 'Find Scenario Properties' option.

Please note that this option is currently 'experimental' so I would appreciate any feedback you care to give. Furthermore, I have one PC on which it will not run correctly (maybe due to some bad files in TS2018, but I am not sure.

Thanks, Mike Simpson

New email: virtualtrains@tpg.com.au

www.rstools.info