

Nachteburg - Rannstadt V1.3.2

(ProjektRoterKnopf)

1. Introduction
2. The Route
3. Necessary Payware/Freeware
4. Included scenarios
5. Installation
6. Note of thanks
7. Other
8. Known Issues
9. Changelog

1. Introduction

This is the fictive route “Nachteburg – Rannstadt” in version V1.3.2 for the Train Simulator 20xx.

The Copyright is owned by Team EndstationZugsYndrom:
(Dion M./Dijon-Senf; Niklas M./HappyNiki; Gianluca R./Giaramses).

The route can be changed for private purposes. It is allowed to hand over a modified version to others privately, but publishing it is forbidden.

Making available the downloadable content or a modified version for the public is prohibited without permission from the author (see previous paragraph).

Distribution of tasks:

HappyNiki: Track construction/infrastructure, signaling, catenary

Dijon-Senf: Scenery, 3D-modeling, scenarios, traffic planning

The concept of the route was conceived by both of us together.

Scenarios may of course be created and can be published anywhere.

Team EndstationZugsYndrom wishes you a lot of fun while exploring the route!

2. The Route

Highspeed Nb – Rs

The highspeed line begins shortly after Nachteburg main station and later accelerates to speeds of 230kph some kilometres. It maintains this speed limit until Bad Spendau and then stays at a limit of 200kph. The route splits into two ways at the entrance to Rannstadt: One of these joins the route from Leipzig after a tunnel and leads to the southern part of the main station, while the other one crosses the Airport-Station of Rannstadt before heading towards the main station. On both ways you pass a total of three tunnels.

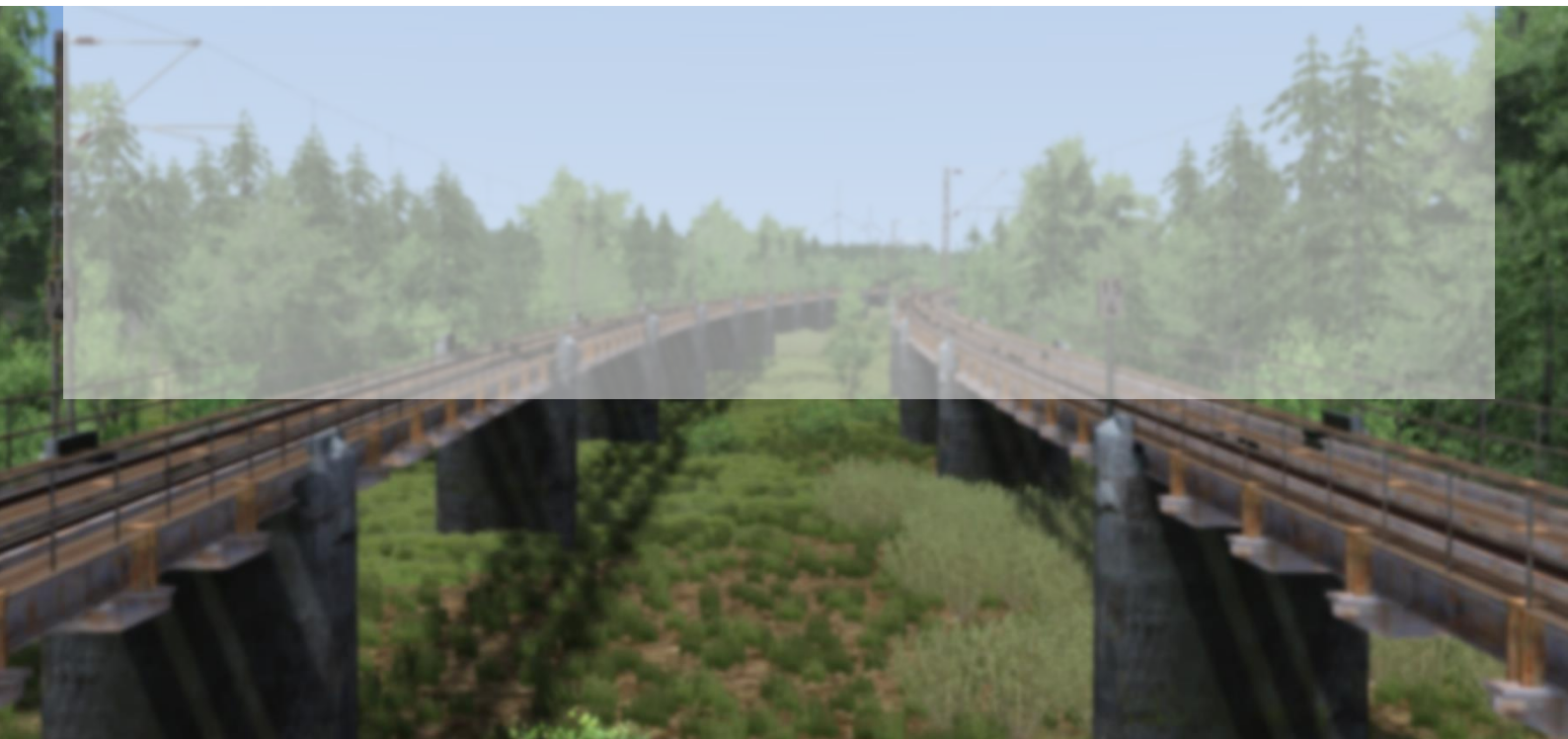
Regional/Freight Nb - Rs

The regional and freight route first runs parallel to the highspeed line and then branches off to Weileben after which it passes between high rocks. After the small village Solze you cross the highspeed line and afterwards you reach Bad Spendau. The track to Querleben begins here. Our route continues, branches off from the highspeed line just to meet it again a few kilometres later in Gnöben, where both of them run in a long straight line. Then it branches off again and passes Wulndorf and Nielbe to reach the Airport Station of Rannstadt. There both regional and highspeed line are uniting to lead to the main station together. Freight trains have an additional route to bypass the airport via the old regional track.

Bad Spendau – Querleben

Starting in Bad Spendau the tracks will first lead via Fürtherstädt to Görsten, which had been an important junction for some intersecting routes in this region several years ago. Including the so-called "Kanonenbahn". Today only some old rusted tracks are left. The route between Bad Spendau and Querleben is the only one still being used. There have been two tracks, but it was reduced back to one rail. Between the two stations of the community Heckförtendorf/Stühs is a tunnel, which enables trains to quickly cross the Stühsberg without having to bypass it. Shortly before Querleben the route from the quarry joins us. From here on the two rails remained drivable. Later there is even an additional third rail from the branch line to Oschersleben coming from the north. Then we hit the main station of Querleben.

The route network plans are included as a separate file.



3. Stations and railyards

[Nachteburg Neustädter See (LNBNE)]

The junction Neustädter See connects the freight yard of northern Nachteburg, the track to Wolfsburg and the main line to Bad Altburg. The double track line from the freight yard leads to the main line. At the same point, the one-track-line to Wolfsburg branches off, where train lines RB36 and RE6 are running. 2026 there will be a new station built for all trains between Nachteburg, Bad Altburg and Wolfsburg.

[Nachteburg Freight Depot North (LNBGN)]

The freight depot of northern Nachteburg is situated in the city districts of Rothenweiler and the northern commercial area. It holds a drive-in-group and an exit group and an additionally group, especially for shunters to the port and industry and the mine in Zielitz. The great times of the freight yard have already been some years ago, which can be seen from the remains that exist. It is directly connected to port of Nachteburg. The most freight trains departing or arriving in Nachteburg, have their start and ending point here. Due to the variety of industry at the port almost all types of goods are transported from here, with groupage and liquid goods as the most common.

[Nachteburg-Rothenweiler (LNBR)]

Directly at the freight depot, but clearly separated is the station Rothenweiler, where every train of line RB36, every second RE3 as well as the single daily trains of line RB22 to Stendal are stopping.

[Nachteburg Port]

The port area of Nachteburg stretches some kilometres along the Elbe. Above all, there are many transfer points between waterway, road and rail transport. In the north is a connection to the wind turbine facility of ENERCON. There is also an old siding station at the territory of DB Energie GmbH, where shunter locomotives and construction trains are stored. In the south is the yard of the Nachteburger Hafenbahn, which is running most of the shunting traffic. Further south is the old port, which belongs to the Nachteburger Eisenbahnfreunde e.V. for some time now.

[Biederitz (LBZ)]

The small village Biederitz is situated in the east of Nachteburg. The main line to Burg and Berlin leads off to the north east, while the small line to Loburg and Altengrabow branches off. The station is served by lines RB37 Loburg<>Nachteburg and RB40 Burg<>Brunswick. Between the rails to Berlin there is an additional track for freight trains to be passed by passenger trains. In direction of Nachteburg the track overpasses the Elbe-Umflutkanal, a channel to avoid floodings in the city, where the small creek Ehle can be found.

[Nachteburg route intersection Neustadt]

That's an important junction for all trains. Local and long-distance rail traffic parts into direction of Bad Altburg or Biederitz/Berlin. Freight trains from Berlin have the possibility to reach the northern freight yard of Nachteburg via a connection between both routes, which is also an alternate track for long-distance and freight trains, if Stendal-Rathenow-Berlin is closed, even if this takes almost an hour longer.

[Nachteburg Neustadt (LNBN)]

The second largest and important station of Nachteburg is situated in the district of Neustadt. Here are This is where the route branches to Bad Altburg and Berlin separate. The train station is divided into 2 platforms. The trains in the direction of Nb-Rothenweiler/Bad Altburg (RB22, RB36, RE3, RE6) stop at the first platform, while the trains in the direction of Biederitz/Berlin (RB37, RB40, RE1) stop at the second platform. Long-distance trains only stop here as a replacement due to accidents and constructions. In the 1980s, the first platform got a new connection to Nachteburg main station via new tracks, which were intended to relieve the second platform to the main station. Both routes run a few meters apart.

[Nachteburg Main Station (LNBH)]

The main station of Nachteburg is the heart of rail traffic in central Saxony-Anhalt. 14 local and 10 long-distance lines end, begin and stop here. Sometimes the distances between the stopping trains are small, which is why punctuality is very important here. The frequency of trains to the Harz Mountains is high, but you can also get to Rannstadt and Bad Alburg from here on average every 30 minutes. An overview of which lines stop at which platforms can be found in the document "Gleisbelegungen_AU". 8 routes lead out of the station: The old industrial line to the northwest, the depot of Nachteburg, the old line to Neustadt (and on to Biederitz), the new line to Neustadt (and on to Rothenweiler), the line to Dessau, the connection to the freight yard Mitte, the regional and goods route to Nb-Süd and the Highspeed line Nachteburg-Rannstadt beginning here.

However, there is no room to expand the station, although the line that branches off to Dessau could use another track.

[Nachteburg Elbkurpark (LNBE)]

If you want to head towards Dessau from Nachteburg, you first cross the Elbe and then end up south of the "Elbkurpark", a family and amusement park. On its territory there is a artificial hill, which is occupied by solar cells on the south side. The station itself consists of 2 middle tracks and 2 outer platform tracks. The RE13 stops here every hour.

[Nachteburg-Luckau (LNBL)]

The small stop is served hourly by the S6. RB40 and RB22 also stop here sometimes.

[Nachteburg Freight Yard Mitte (LNBGM)]

The small freight depot southeast of the main station was built for the local industry on the Elbe. Today there is only one container terminal here. Most trains use the northern freight yard, mostly short freight trains with shunting locomotives are pulled from there to the yard Mitte. It is also often used for stopovers and breaks by freight trains.

[Nachteburg South (LNBS)]

This four-track station is served by all regional trains that operate here. To the south and west, the route splits to Bad Spendau, Oschersleben and Helmstedt. platform 4 is only used by RE11/21 / HBX, sometimes also by RB22. The RE3 always runs from platform 2. Southbound all trains run on platform 1, and the lines coming from Oschersleben or Helmstedt stop at platform 2. Freight trains run via platform 3 and 4 in the direction of Nachteburg Hbf via Nb-Luckau.

[Weileben-Brunnenstadt]

The station "Brunnenstadt" was built for a state event in the year 2014 in Weileben. Since the station is well used due to its near to the center of the village, it is still in operation today, but is served exclusively by the RB22 and S6.

[Weileben]

The railway station of the village of Weileben is located on the southern edge. In the 1980s, a regional train line from the city of Nachteburg ended here, which only operated in the nearer city area between Zielitz and Weileben. Today the station is served by all lines, only the RE3 only stops every two hours, the non-stopping journeys are routed via the highspeed line.

Due to the better location of the Brunnenstadt station, it is considered to bundle all lines to this station.

[Solze]

The small station of Solze on the Solzeberg, which is named after the village, is a remnant of the last century. Due to the small number of inhabitants in the area, the maintenance of the station isn't worth it, which is why a closure is being considered. Currently only the S6 and selected trains of the RB22 stop here.

[Bad Spendau North]

On the branch line and former section of the Kanonenbahn you can find the the station Bad Spendau North, which connects the northern parts of the small town to the route network. Hourly RB50 trains stop here.

[Bad Spendau]

This larger town between Nachtburg and Rannstadt is the hub for many lines and routes. Here the lines RB51, RE11 and RE21 (or HBX) of the Saxony-Anhalt diesel network branch off in the direction of the Harz Mountains. The lines S6, RB22 and RE3 operate on the main line Nachtburg<>Rannstadt, each with hourly stops at the station.

The high-speed line runs parallel to the main line through the station in the former area of the Bad Spendau Freight yard, which was no longer used several years ago due to the disappearance of industry and was therefore demolished. There are junctions in both the north and south directions to be able to switch to the high-speed line or to leave it.

[Gnoeben]

Gnoeben consists of a station and a decayed freight yard. The station is served by all S6 and RB22 trains. The freight yard is framed between the main and highspeed lines and is of little importance due to the closed industry and reduced connections, which is why it is primarily used as a point for breaks or stops. General cargo loading and unloading rarely takes place. The junction in the north and south to the village can be used to switch from the high-speed line to the main line and vice versa.

[Wulndorf]

This is also a remnant from the old days here: the station can only be used in both directions at a speed of 60 kph due to the built-in junctions. There are 3 middle tracks between the two outer platform tracks, which are practically useless. The station is served by S6 and RB22.

[Nielbe]

Station of Nielbe is located behind the junction of the Rannstadt<>Dessau line and is regularly served by S6 and RB22 trains. It is outside of the village area.

[Nielbe Ort]

Located right in the center of the village and served every hour by the RB52. Parallel to this is the loading of an agricultural processing plant.

[Rannstadt Airport]

The station was built as part of a major project to expand the Rannstadt Airport and was intended to serve as a long-distance stop. Due to the lack of interest in Rannstadt Airport, as it is in the region of many other airports, e.g. Leipzig, Bad Altburg or Berlin, some long-distance lines were quickly removed from the timetable, so that the station is now only served by IC line 55 at peak times. All trains on lines S6, RB22, RB52 and RE3 stop here. The train station and airport are very hated by the population due to the long construction time and high waste of money and are commonly referred to as the "Rannstadt money grave".

[Former Rannstadt Flughafen]

On the old main line and today's freight line is the former Rannstadt airport stop, which connected the northern part of the city to rail traffic. It has not been served since 2015.

[Rannstadt Freight yard]

The city's freight depot is located parallel to the main line between Rannstadt and Nachtburg. Lots of goods are handled here every day. The yard offers 3 groups of tracks and a parking area for locomotives.

[Rannstadt Depot]

The depot consists of a parking area with various workshops and gas stations and an ICE depot, which was built due to the high volume of long-distance traffic.

[Rannstadt Domplatz]

A new stop was opened right next to the Rannstadt Cathedral in 1994, which is now served by S6, RB22, RB52 and selected RE3 trains. It connects a part of the old town along the Saale to rail traffic.

[Rannstadt Main Station]

The main station of the big city is divided into a north and a south part. The northern part is mainly served by trains from/to Merseburg, Erfurt, Jena, Dessau or Nachtburg. Everything in the direction of Leipzig, Bitterfeld, Harzburg (east Harz), Nordhausen and Göttingen can usually be found in the southern part. Long-distance traffic primarily uses platforms 5, 7, 8, 10 and 13, of which platforms 8 and 10 were specially built for long-distance traffic.

Changing tracks between the various routes that connect here is difficult, which is why good organizational skills are required. The Rannstadt Main Station has an enormous volume of long-distance traffic due to the 4 high-speed routes that cross here.

[Rannstadt Kölner Platz]

The crossing station at the Square of Cologne was built in the late 2000s during the construction work for the building of the Rannstadt<->Erfurt and Rannstadt<->Göttingen high-speed lines. All RB and RE lines (RB25, RB75, RE8, RE9, RE16, RE18) that run along the passing routes stop here.

It consists of an upper and lower part. After the Main Station of Rannstadt, the route splits in the two directions of Erfurt and Harzburg (East Harz). The Harzburg section crosses the Erfurt section above.

[Rannstadt West]

Shortly before the westbound exit of the city, the train station connects the western part of Rannstadt. RB75 and RE8 stop here. Behind it there is the industrial siding to the Röllberger brewery. The highspeed line Rannstadt<->Göttingen crosses the main line just before the station and then continues in the direction of Aschersleben.

[Former Rathmannsdorf]

On the way to Aschersleben we cross the former Rathmannsdorf station in the middle of a pine forest. It was closed in the 1990s due to the distance and difficulty of access.

[Strummendorf]

Strummendorf train station is located on the first slight hills of the north-eastern Harz. At former times, the route was built directly through the very small village. Due to the long and not easy to overcome slope, it was decided to build a station to be able to take trains aside if necessary. Until several decades ago there was also a connection to a farm.

Branch line Bad Sprendau <> Querleben

[Bad Sprendau Salzburg]

Behind the junction of the main line is the small Salzburg station, which has a platform for the hourly stopping trains of the RB50. There are also 3 tracks for freight traffic. Since there are no connections nearby, the freight yard is now only used to collect wagons or to have dual-powered locomotives take over freight trains, which is but a rare occurrence.

[Fürtherstädt]

The three-track station in the village is only used as an evading or passing by option. All lines (RB50, RE11, RE21, HBX) stop here.

[Görsten]

The former station of Görsten was still very important for the region until the end of the last century. Today, track 4 has been dismantled and the platform for tracks 3+4 is completely closed. The goods yard has been reduced too, as have the connections to the cannon railway and the asphalt mixing plant in the south. Solar cells were set up on the former industrial site. Tracks 1 and 2 are the platform tracks, track 3 is a passing track. The former cannon railway leads to Querleben in a south-westerly direction. The second track is mostly overgrown or dismantled.

[Elberstedt]

The small platform is on the edge of the new settlement and is served hourly by the RB50.

[Stühs]

Stühs, a part of the Heckförtendorf municipality, is cut off from it on the eastern side of a small Harz hill. Only the RB50 stops here. The former second track and platform are still there, but no longer connected.

[Heckförtendorf]

The municipality's modernised, two-track railway station is located in the middle of the village on the site of the former goods station. Until several years ago, it also had a connection to a farm. Only the RB50 stops here as well.

[Querleben Quarry]

On the way to Querleben, you cross the junction to the Querleben-North mine, a lime quarry. The connection is still used to discharge rubble or lime. The wagons are collected in Querleben.

[Querleben Wildpark]

The station, built in 2012, is in the near of the Egelner Hill, on which there is a large-scale wildlife park. The last stage from the station to the park can be done by bus or by the zoo's shuttle service. The station is connected every hour by the RB50, during holiday periods and at weekends also by selected RE11/21 and HBX trains.

[Querleben-Market]

The well-preserved, historic farmer's market hall in Querleben is a well-visited part of the city and has therefore been given its own stop, which is served by the RB41 and 43 lines.

[Querleben]

Junction and connecting station is the most important role of the Querleben station in the western part of the city center. A lot of Harz diesel network lines in all directions start and end here. The station is served by the following lines: RB41, RB43, RB47, RB50, RE10, RE11, RE21, RE31 and HBX. In GDR times, some special trains and "Städteexpress" trains also drove to the second largest city in the north of the Harz. Attempts to let long-distance tourist trains run from Berlin or Bad Altburg via Querleben and Halberstadt to Wernigerode, Thale or Goslar in the Harz Mountains were discontinued. The HBX is the last remnant of a wide-ranging rail service.

Shortcuts for stations and railyards in the AU

LAL	- Aschersleben	LHER	- Heeren
LANG	- Angern-Rogätz	LKA	- Klammberg
LANGO	- Angern Village	LKER	- Kerkau
LBAA	- BA Airport-Terminals	LMF	- Meßdorf
LBAAH	- BA Old Port	LMGA	- Nahrstedt
LBABA	- BA Berlin Avenue	LMGN	- Möringen (Altmark)
LBAF	- BA Airport Long-Dist. Station	LMW	- Mahlwinkel
LBA G	- BA Port Freight Yard	LNBH	- Nachtburg Main Station
LBAGT	- BA Götter-Therme	LNBE	- Nachtburg-Elbkurpark
LBAH	- BA Main Station	LNBN	- Nachtburg-Neustadt
LBAHM	- BA Hornedorf/Fair	LNBNB	- Nachtburg-Neustadt Lake
LBAHT	- BA Hannoversches Tor	LNBL	- Nachtburg-Luckau
LBAHS	- BA Main Station S-Bahn	LNBR	- Nachtburg-Rothenweiler
LBAHU	- BA Heldenufer	LNBS	- Nachtburg South
LBAJV	- BA Jävenitz	LPRZ	- Pretzier
LBAM	- BA Mitte	LRAD	- Rademin
LBAMZ	- BA Fair centre	LRIT	- Ritze (Salzwedel)
LBAN	- BA North	LRT	- Rannstadt Main Station
LBAND	- BA Niendamm	LRTA	- Rannstadt Airport
LBANP	- BA New Promenade	LRTD	- Rannstadt Domplatz
LBAO	- BA Eastern Elbe	LRTF	- (Former) Rannstadt Airport
LBAP	- BA Pilges	LRTG	- Rannstadt Freight Yard
LBAPF	- BA Peace Square	LRTK	- Rannstadt Square of Cologne
LBAQ	- BA Querstedt	LRTW	- Rannstadt West
LBARB	- BA Ringbergallee	LS	- Stendal Main Station
LBAS	- BA South	LS G	- Stendal Freight Yard
LBASG	- BA Schlossgarten	LSCHO	- Schorstedt
LBASK	- BA Salzkurpark	LSFH	- Stendal University
LBAT	- BA Technics centre	LSN	- Stendal North
LBATU	- BA Technical University	LSS	- Stendal-Stadtsee
LBAUS	- BA Uchtspringe Settlement	LSSO	- Stendal southeast
LBAW	- BA Western Elbe	LSTD	- Strummendorf
LBAWS	- BA Willy-Brandt-Lake	LSV	- Stendal Vorbahnhof
LBAX	- BA Port Junction	LSW	- Salzwedel
LBAXS	- BA Port Entrance South	LSWB	- Stendal-Wahrburg
LBEE	- Beese	LSZ	- Solze
LBIF	- Bindfelde (b Sdl)	LTM	- Tangermünde
LBOL	- Borstel (b Sdl)	LTMW	- Tangermünde West
LBRP	- Brunau-Packebusch	LTME	- Tangermünde Elbufer
LBSE	- Barleben Lake	LTH	- Tangerhütte
LBSP	- Bad Spandau	LWEI	- Weileben
LBUS	- Burgstall	LWEIB	- Weileben-Brunnenstadt
LBZ	- Biederitz	LWLS	- Wolmirstedt
LCLH	- Colbitz-Letzlinger Heide	LWUD	- Wulndorf
LDK	- Demker	LZI	- Zielitz
LFKH	- Falkenstein/Harz	LZI G	- Zielitz Freight Yard
LFL	- Fleetmark		
LGA	- Gardelegen Station		
LGA G	- Gardelegen Freight Yard		
LGAK	- Kloster Neuendorf		
LGAM	- Gardelegen-Mitte		
LGNB	- Gnoeben		
LGSW	- Groß Schwechten		
LHAO	- Harzburg (Eastern Harz)		

4. Necessary Payware/Freeware

Payware

Konstanz - Villingen by Maik Goltz Konstanz – Villingen on store.steampowered.com
Freiburg – Basel by Pad-Labs Freiburg – Basel on Aerosoft.com (steam version also working)
European Loco and Asset Pack ELAAP on store.steampowered.com
Berlin – Leipzig by VirtualTracks https://www.virtualtracks.eu/Berlin-Leipzig_DE (steam version also working)
Münster – Bremen by VirtualTracks Münster – Bremen on virtualtracks.eu (steam version also working)
Im Köblitzer Bergland V3 reloaded 2.0 by SAD IKB3 on Aerosoft.com (steam version also working); you only can use the reloaded V2 for this route, because in older versions all objects are in different folders

Freeware

Oberleitung by TrainSimContent https://rail-sim.de/forum/filebase/entry/3451-rsp-tsc-ol-system-v1-36/
Hektometertafeln by TrainSimContent https://rail-sim.de/forum/filebase/entry/3488-tsc-hektometertafeln/
PZB-Magnete by TrainSimContent https://rail-sim.de/forum/filebase/entry/3485-tsc-pzb-magnete/ (Magnets has been replaced almost completely with SBS-Magnets; can only be replaced by hand; the reason why some of them are still there)
Gleisobjekte by TrainSimContent https://rail-sim.de/forum/filebase/entry/3489-tsc-gleisobjekte/
H-Tafeln by TrainSimContent https://rail-sim.de/forum/filebase/entry/3487-tsc-h-tafel-set/
Weichenmotoren/-Laternen by Schienenbus https://rail-sim.de/forum/filebase/entry/1902-sbs-weichenlaternenset-2-0/
Luftbrückenset by Schienenbus (All needed Assets contained in the Rodachtalbahn) https://schienenbus.net/strecken.html
PZB-Magnete V1.3 by Schienenbus (will replace TSC-Magnete) https://rail-sim.de/forum/filebase/entry/3456-sbs-pzb-magnete-1-3/
HV-Kompakt-Signale by Schienenbus https://rail-sim.de/forum/filebase/entry/2977-sbs-h-v-kompaktsignale-1-2/
KS- und HV-Signale by Schuster https://rail-sim.de/forum/filebase/entry/2921-signalteam-deutsche-ks-signale-v9-5/ https://rail-sim.de/forum/filebase/entry/1261-signalteam-deutsche-hv-signale-v9-5/
Signalscripts/-trigger by Schuster https://rail-sim.de/forum/filebase/entry/1876-schuster-freeware-skript-module-und-signal-trigger-v9
Grass-Pack + Tree-Pack by VulcanProductions https://www.vulcanproductions.co.uk/rb.html
Häuser by Radiomaster https://rail-sim.de/forum/filebase/entry/2462-radiomaster-h%C3%A4user/
Stationen by Radiomaster https://rail-sim.de/forum/filebase/entry/2463-radiomaster-stationen/
Vegetation by Radiomaster https://rail-sim.de/forum/filebase/entry/2453-radiomaster-vegetation/
icepak by ice https://dutchsims.nl/viewtopic.php?t=1352
Hagen-Siegen V3 by doctorgep https://www.railsimulator.net/wsif/entry/186-hagen-siegen-v3-1-4-freeware/
HL-Signale by 143er https://rail-sim.de/forum/filebase/entry/2671-lichtsignale-der-deutschen-reichsbahn-hl-ezmq/
HV/KS-Zwergsignale by CMDCornflakes https://rail-sim.de/forum/filebase/entry/5769-cmd-hv-und-ks-sperrsignale/

5. Scenarios

There are 10 standard scenarios included in this route and several starting points for Quick Drive (with AI-traffic). In contrast to the scenarios in the first version, the new ones offer a better quality. (only German!)

Number. [train] Name	necessary Payware	necessary Freeware
QuickDrive	vR BR146 TSG BR425 DTG BR442 CT BR650 RT IC2	BR442 S-Bahn Mitteldeutschland BR146.0 DB Regio Mittelbe TTB Dostos DB Regio Mittelbe BR425 DB Regio Mittelbe
01. [146] Dancing in the Moonlight		
02. [189] Von ganz Oben nach ganz Unten	vR BR189 3DZUG Vp Güterwagen DTG BR442	BR442 S-Bahn Mitteldeutschland BR442 Abellio
03. [425] Genug Schnee für Heute (contains announcements) With the help of SirJannikSon	CT BR650 3DZUG ICE4 DTG BR442	BR442 S-Bahn Mitteldeutschland
04. [1216] R-Oh-Lala	RWA 1216 3DZUG ICE4	
05. [232-Seddin] Harz-Express	vT Schwere Fracht für Seddin 1.11 CT BR650	3DZUG Städteexpress DR Mitteleinstiegswagen
06. [401] Rasende Weißwurst	3DZUG ICE1 3DZUG ICE4 DTG BR442	BR442 S-Bahn Mitteldeutschland
07. [101] IC2049	vR BR101 IC RT IC2	
08. [650] Herbstgefühle	CT BR650 RSSLO BR642 vT Schwere Fracht für Seddin 1.11	
09. [261] Frühlingsgefühle	DTG BR261 CT BR650 3DZUG Vp Güterwagen	
10. [IC2] Nicht Heute	RT IC2 DTG BR442	BR442 S-Bahn Mitteldeutschland
11. [112] Das doppelte Lokchen (contains announcements)	vR BR112 RT IC2 RT Twindexx DTG BR442 3DZUG Vp Güterwagen CT BR650	BR442 S-Bahn Mitteldeutschland BR442 Abellio EZY Twindexx-ODEG

Rolling material, necessary for (nearly) all scenarios:

Payware

[vR BR146](#)
[TSG BR425](#)
[TBB Szenariopack 3](#)

Freeware

[BR146.0 DB Regio Mittelbe](#)
[BR425 DB Regio Mittelbe](#)
[TTB Dostos DB Regio Mittelbe](#)

More scenarios can be found here: [Rail-Sim](#)

Because of the changes between V1.2.1 and V1.3 some of the older scenarios may not work. This must be tested individually for each scenario.

6. Installation

Installation of the route:

1. delete old route and assets

IMPORTANT!

Due to the many changes we recommend to delete the old folder of the route. Some tiles aren't existing in the new version but do in the old, so through overwriting the route they would still be there. The same applies to the asset folder. (In any case, when installing new versions, it is always better to delete the old version first and then install the new one.)

While deleting, the old scenarios will be deleted too. If you want to keep them, please save them previously. Since most of the old scenarios do not work in the new version it is not necessary to do so.

- open folder Content/Routes and search for route folder (begins with ba31081b...)
- delete!
- now search and open folder Assets/EZY
- delete these folders: „ProjektRoterKnopf“ and „Alternativeuniverse“ (optionally: „Bahnsteigobjekte“ and „Gleisinfrastruktur“)
- Now the route can be installed:

2. Via Utilities.exe

- unzip folder
- open Utilities in the Railworks directory
- click on „refresh“
- click on „Install“
- Choose .rwp-file and confirm
- ready!

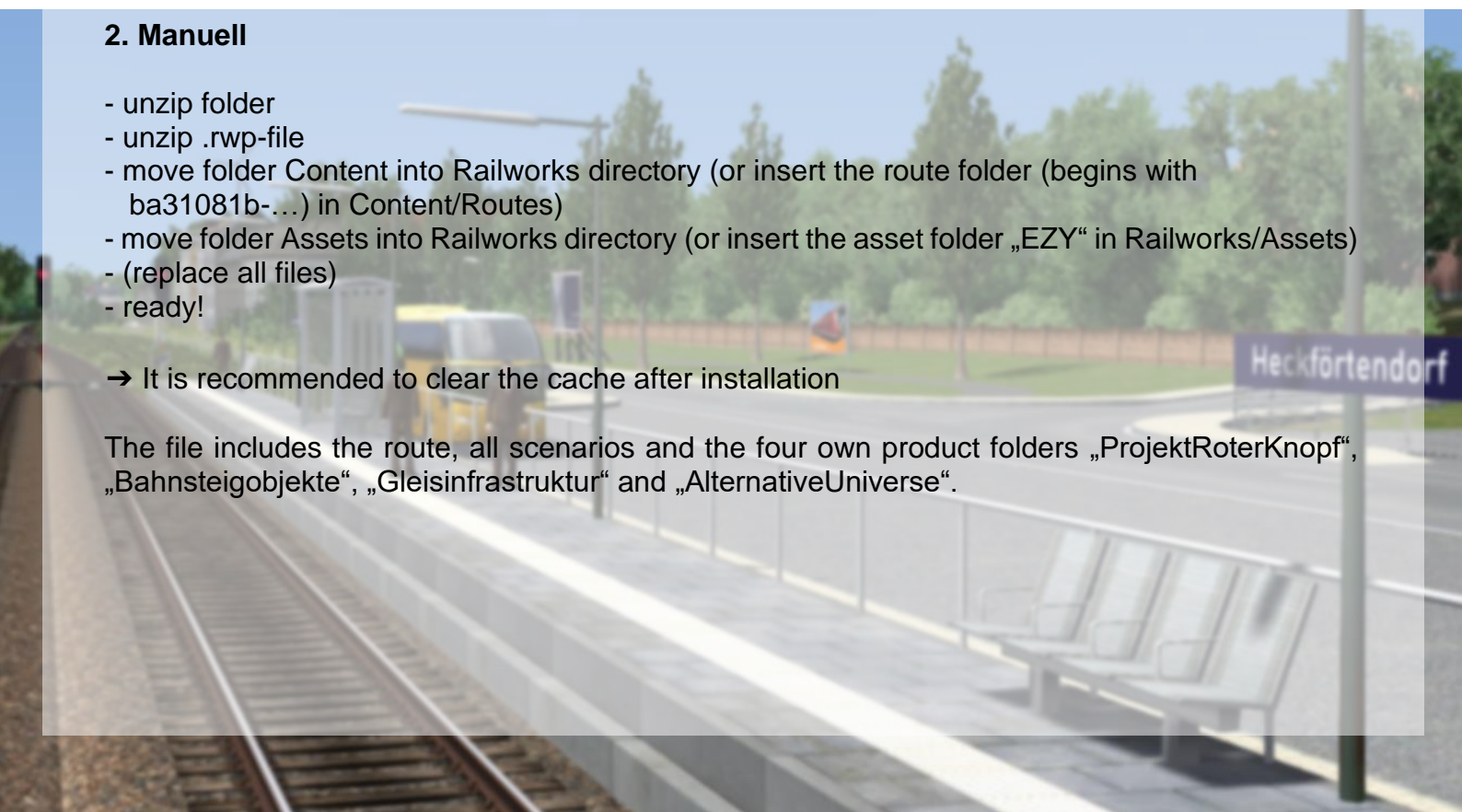
OR:

2. Manuell

- unzip folder
- unzip .rwp-file
- move folder Content into Railworks directory (or insert the route folder (begins with ba31081b-...) in Content/Routes)
- move folder Assets into Railworks directory (or insert the asset folder „EZY“ in Railworks/Assets)
- (replace all files)
- ready!

→ It is recommended to clear the cache after installation

The file includes the route, all scenarios and the four own product folders „ProjektRoterKnopf“, „Bahnsteigobjekte“, „Gleisinfrastruktur“ and „AlternativeUniverse“.



7. Note of thanks

Of course we thank all providers for their wonderful objects for the TS!
Without the wonderful work of so many different people, we would never have the mass of assets to realize a project like this.

We would also like to thank our beta testers who helped us along the route and the documents to check them for errors and improvements:

- | | | |
|----------------|-------------------------|---------------|
| - Trainsim TV | - Mavericks Bastelstube | - TrainOmsiTV |
| - SirJannikSon | - Aaron | - StrgV |
| - Ludelchen | - Leleleandro04 | - MS3LM |
| - Wally | - Kroneheit | - Giaramses |

8. Known Issues

The route has a few small problems that are not of major importance. For example, an LZB-end in Rannstadt Gl. 8, where we don't know what is causing it. And the route doesn't look as good in winter as we would like it to be, which is due to the fact that our own objects do not have winter textures yet. These objects are not to blame alone, there are a few other things that make the route seem a bit unpleasant in winter.

9. Other

We're look forward to your suggestions, error messages, advices, etc. in order to be able to further improve the route! You can do this in the thread or privately via PM to one of us team members (preferably Dijon-Senf or HappyNiki).

ADVERTISING FOR SIMLIVERADIO:

Team EZY has entered into a cooperation with SimLiveRadio. A couple of billboards for the radio station were placed along the entire route. But we made sure not to flood you with them. The arrangement was made through Niklas/HappyNiki, the billboard objects were built by Dion/Djon-Senf. We weren't paid for it.

10. Changelog

There has been a giant leap from V1.2.1 to V1.3 that is also to big, to list everything we have done yet, so here is a short summary:

New in V1.3

- Reconstruction of the scenery
- New signalling on the whole track
- More realistic arrangement of the signals and scenery
- New section Nachteburg Neustadt – Biederitz
- New section Rannstadt Kölner Platz – Rannstadt West
- 10 new scenarios
- Route is now based on folder „AlternativeUniverse“, no longer on „ProjektRoterKnopf“
- Development of a line network with strong influences from reality, as well as a lot of information about the route and the "Alternative Universe"

New in V1.3.1

- Scenarios
 - o 02: changed timing
 - o 03: changed weather, timing and missing AI trains have been placed
 - o QuickDrive for Nachteburg – Querleben
- Changes in the ReadMe
- Fixed various errors in signaling
- Fixed lights in Weileben -> runs smoother now
- NBÜ ("Notbremsüberbrückung") on high speed line tunnels
- New route section Rs West – Strummendorf (10km)
- And a few other little things...

New in V1.3.2.

- New Scenario (11. [112] Das doppelte Lokchen)
- Some bugs and errors fixed
- Rebuilt Rannstadt Hbf and city centre
- Nachteburg Hbf Pl. 4 has platform now
- Signals and some scenery at Nb Elbkurpark
- Placed grass along the tracks at Rannstadt and between Nb Süd and Weileben

New in V1.4 (FINAL VERSION)

- Changed some trains in scenarios with new repaints for the route by StrgV
- Implementation of the freight yard north of Nachteburg
- New informations for the route in the ReadMe
- Small improvements along the whole route

Update V1.4.0.1:

- Substitution of all tracks to our own models

Update V1.4.0.2:

- Deleted 3 Asset-Folders that are available separately

Update V1.4.0.3:

- Cleaned the route folder, setting free about 100 MB of useless data.

We wish you all a lot of fun!

TEAM ENDSTATIONZUGS YNDROM